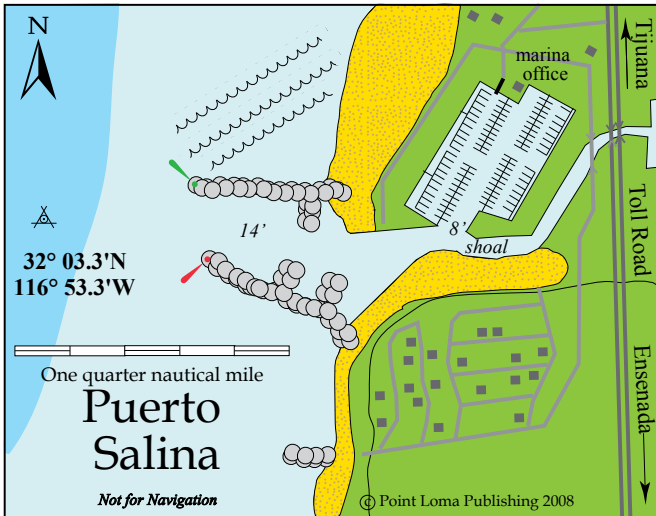


These cumulative changes & corrections as of October 2009 are keyed to pages in your guidebook; please add them. **Red text indicates new stuff since April 2009.** Future UPDATES can be downloaded FREE from the website.



Add this new chartlet to page 23.

**Pg. 22:** LNG terminal plan dropped, but avoid fish pens off the SW side of South Coronado Island, lighted but hard to see at night.

**Pg. 23:** For current entrance depth, hail Marina Puerto Salina on VHF 16 or call (866) 365-2562 or local (646) 155-4186. *See new chartlet above.*

**Pg. 24:** Ensenada harbor: anchoring still prohibited overnight, ask Port Captain on VHF 16.

**Pg. 25-26:** Harbor's SE breakwater lengthened twice; new approach waypoint is 31°50.463' N x 116° 37.532'W. Baja Naval 2 now called Gran Peninsula boat yard, handles larger yachts than Baja Naval 1. New marina planned south of Cruiseport Village Marina. Approach to CVM may be obscured by cruise ship on mole; call for VHF guidance.

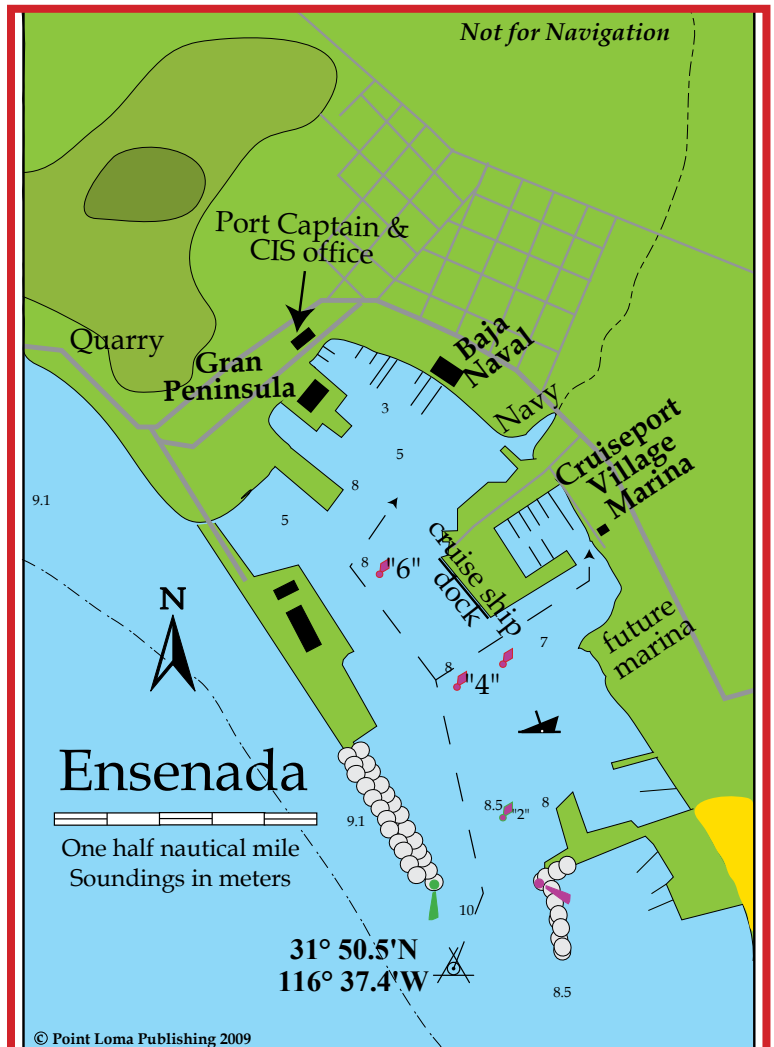
**Pg. 28 & Pg. 253:** Cruiseport Village Marina new contact (646) 173-4141, [www.ecpvmarina.com](http://www.ecpvmarina.com) **Fuel by tanker truck Oct 09.**

**Pg. 32:** Roca El Islote is missing from DMA chart 21140, and missing from some nav software that uses the scanned version of that chart. Roca El Islote (a.k.a. Roca Soledad) lies 1.27 n.m. west of the southern tip of Punta Santo Tomás. Winter kelp beds may foul and obscure safe passage east of Roca El Islote.

Add this new Ensenadachartlet to page 25.

**Pg. 11:** DaNardMarine.com makes excellent dinghy wheels for RIBs. ATT cell service works from US border to San Quintín, in Turtle Bay, Asuncion Bay, Mag Bay, Los Cabos region and La Paz. Cell phones start with extra digit 2. Diesel & gas are about half US price. Exchange \$1 = 13.76 pesos as of 3 Oct '09. H1N1 flu is back but not virulent enough to close schools. Mexican Navy anti-smuggler patrols increase off Pacific Mexico, searching for hidden guns & money going south, hidden drugs & people coming north.

**Pg. 15-16:** You can get your TIP online at [www.banjercito.com.mx](http://www.banjercito.com.mx) In left column under Importacion Temporal de Vehiculos, click Tramites, then English. Serial numbers are required for TIP at importation time. Fishing "boat permit" no longer required.



**Pg. 37:** Chart: the island close north of Sacramento Reef is Isla San **Geronimo**. (Martín is farther N.)

**Pg. 45:** Marina bldgs & Travelift are in, road paved, **docks built but ashore, basin being dredged again. Until this marina is open (hopefully late 2009 to early 2010), yatistas can anchor outside breakwaters & enter by dinghy.**

**Pg. 50:** Pangueros from both Anabel's fuel barge or Enrique's fuel pier compete for your promise to buy fuel from their source, are paid only a tiny commission. **To avoid meter over-reading on big pier, get it in writing first.** If you can prove you've been ripped off, ask them to make it right. If that doesn't work, ask the local Naval Marine Commander to adjudicate the case. Or complain to Tourist Police in Mexico City (55) 5250-0123.

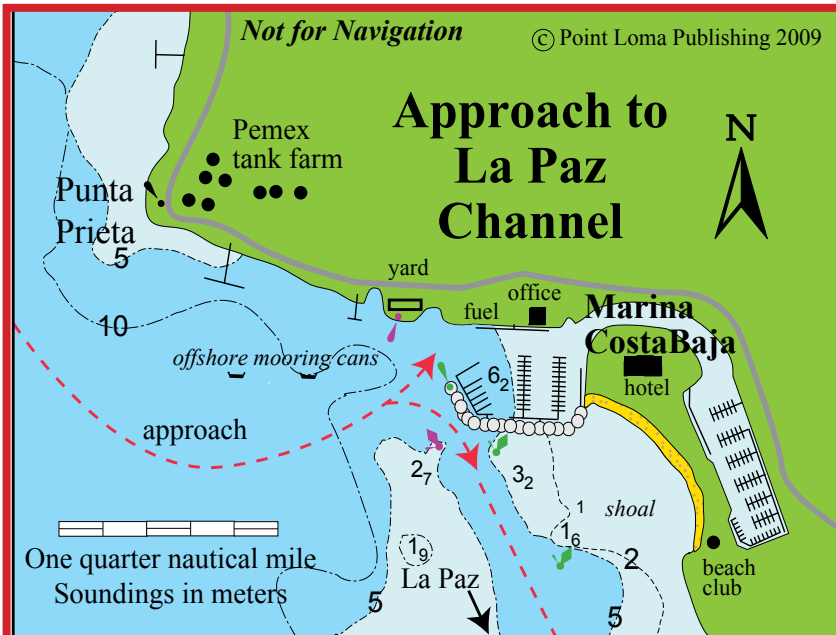
**Pg. 53:** Left column: GPS waypoint 2 miles SE of Isla Asunción is 27°05' N, 114°16' W.

**Pg. 58 - 62:** Hurricane Jimena in early Sept 2009 altered Boca de Soledad channel, so hire a local panguero guide to get you inside and 5 miles to Puerto Adolfo Lopez Mateos (formerly called La Soledad). Severe damage at Bahía Santa María, Man of War Cove & Puerto San Carlos has not been fully assessed as of 3 October 2009; use caution with soundings and buoys.

*(Add this new chartlet of the Corridor to page 74.)*



**Pg. 69-71:** Moorings removed from Bahía San Lucas; land a dink below Marina Cabo San Lucas office in north end. MCSL built new "Q" dock for megayachts. **Baja Ha Ha 16 ends here. Marina del Rey (35 slips, fuel dock) just west of entrance into inner harbor; new phone (624) 143-6523.** Sea Preme Vessel Agency now run by ship's agent Victor Barreda Jr. VHF 16, 22 and 88A. Text on page 69 & 71 is transposed, sorry. Wal-Mart CSL is open. Marina Puerto Los Cabos has 15 new megayacht docks to 150' and their fuel dock open in NE corner. Bridge to SJC is almost done. Marine Group Los Cabos haul-out yard is in construction, plan to open February 2010, will have 150-ton Travelift. Puerto Los Cabos breakwater is GPS 23° 03.364' N, 109° 40.258' W.



**Pg. 75-76: Right column: Correction:** GPS approach waypoint to Cabo Los Frailes is 23°23'N, 109°24'W. Waypoint shown on Los Frailes chartlet is correct. Organic Man visits Cabo Pulmo village with fresh produce. Caballero's, La Palapa, Nancy's and Tito's have welcomed yatistas. Park rangers are vigilant to protect coral reefs.

**Pg. 77 - 79: New marina planned at Bunea Vista. Gran Sueño (part of Bahía de los Sueños development) visible at south end of Muertos Cove. Big homes dot cliffs of Punta Perico. New nav light on N tip of Isla Cerralvo.**

**Pg. 84:** Yacht-hauling ships pick up & drop off at anchor just outside Bahía Falso near Pichilingue harbor.

**Pg. 85: New chartlet of La Paz Approach**

*Add this new La Paz chartlet to page 85.*

# Mexico Boating Guide

Add this new chartlet to page 89.

(previous page). Use caution rounding south side of Punta Prieta on approach to La Paz Channel, as Port Captain re-routed buoys. Marina CostaBaja can pilot you around these hazards and into their basin, if you give them enough advance notice and are coming to buy fuel or rent a slip. **FUBAR 2009 ends at Marina CostaBaja. Marina Cantamar (15 slips) is north side of Pichilingue isthmus.**

**Pg. 89:** Marina Singlar La Paz (Fidapaz) (possible new owners) has 50 slips, Travelift, repair yard, dry storage, fuel dock, lap pool, free pilot boat to lead you in. (See new chartlet above.) (612) 124-2153 or 2206.

**Pg. 90:** Free town map & list of local services from Club Cruceros, new clubhouse entrance between Marina de La Paz & Marina Don Jose. **Bay Fest 2010 in February.**

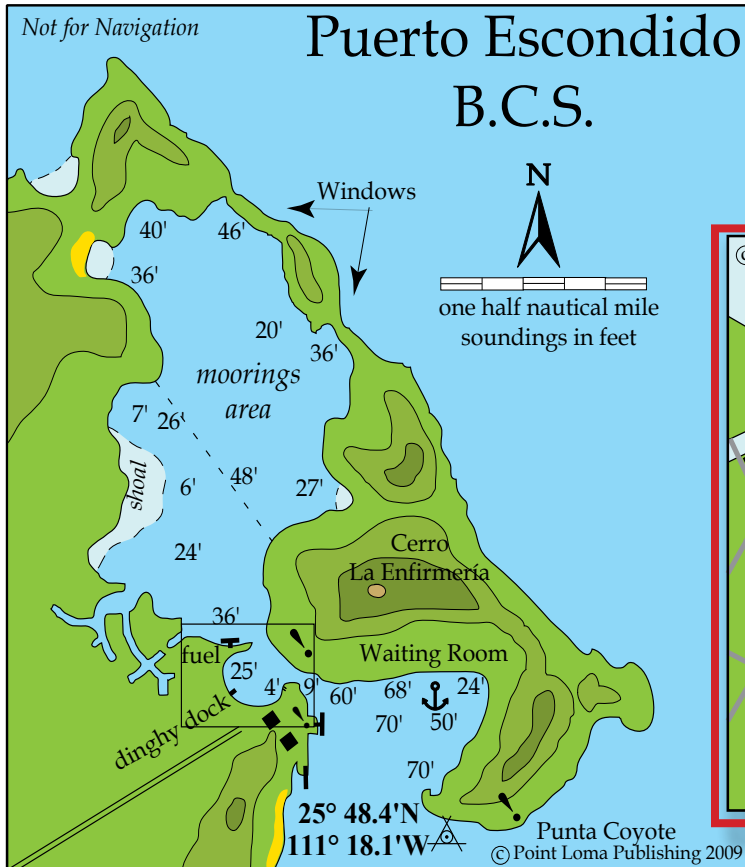
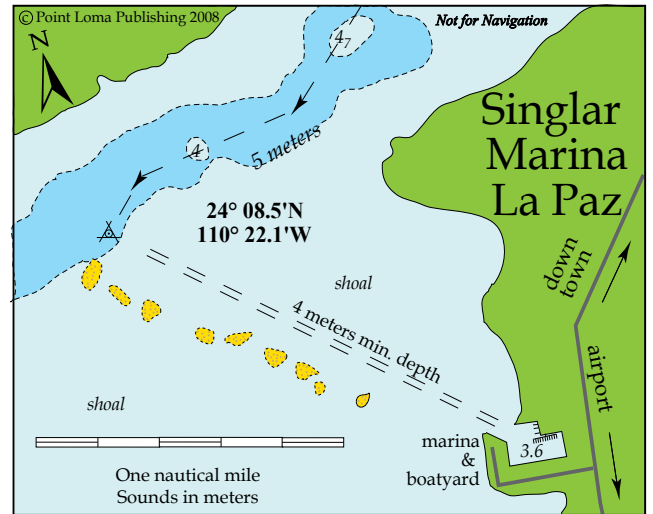
**Pg. 106:** Avoid the uncharted reefs around lighted Roca San Marcial by staying 2 miles outside of the main Roca. **In Agua Verde's north corner an abandoned schooner is reported sunk and a hazard to anchoring.**

**Pg. 111 - 114:** (See new chartlets below for page 111.) Anchoring is only in the Waiting Room (API). Fondaport moorings repaired, price lowered. Floating fuel dock is below boatyard Travelift and dry storage. **Loreto Fest 2009 slated April 30 - May 3. Moorings weathered September 2009 Jimena storm well.**

**Pg. 118:** A dangerous wreck was reported in 20' of water 100 yards west of 25°59.540' N, 111°07.500' W - about 1/4 mile off the old pier. Top of the 80' steel shrimper on her side is reportedly covered at high water.

**Pg. 126-127:** Mulege river re-cut its south bank Sept 3 in Hurr. Jimena, bottom & entrance bar are not yet re-surveyed; Capitanía & river homes are being rebuilt; most town stores & restaurants are open and need tourism bucks to rebuild schools. Serenidad and Chivato airstrips are reopened.

## UPDATES ~ October 2009

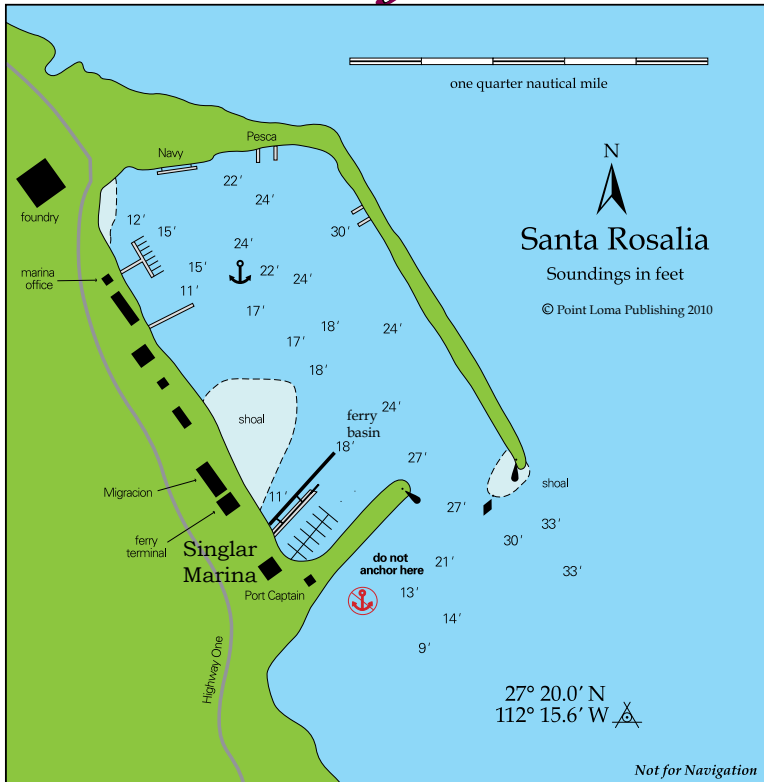


**Pg. 131:** The newer Singlar Marina Santa Rosalia (20 slips, fuel, 3-story office; see photo below (615) 152-1768) came through Hurricane Jimena fine; older Marina Santa Rosalia lost all but 2 slips. Harbor entrance reported to need dredging, but ferry is in operation.



Add this new chartlet to page 111.

*This replaces chartlet on page 131.*



**Pg. 141:** One of 2 Pemex stations in town often has diesel. Paved road to Hwy 1 has turnouts for Land Bridge truck. Fonatur still plans to improve ramps, build marina & floating fuel dock somewhere in LA Bay.

**Pg. 149–151:** Singlar Marina San Felipe (20 slips, fuel) was rebuilt in darsena SW corner.

**Pg. 153:** Marina Puerto Peñasco (20 slips to 79' in NW corner of harbor) now owned by Marinas de Baja (La Paz and CSL); (638) 388-6944. New Singlar marina & floating Pemex dock (638) 388-6143 are immediately west of old stationary fuel dock; big tanks on hillside behind marina are being replaced for boat storage yard. Juan's Safe Marina is closed.

**Pg 156-157:** Tepoca village expanding, more groceries & occasional gas. La Libertad village west of CFE pier is handy dinghy beach, nice friendly town; keep air strip in mind for medical evacuation in this region. Sargento Bay is part of new Seri Tiburon Biosphere; new road brings campers to bay's north sandspit.

**Pg. 163:** Kino Bay Club Deportivo "Rescue One" service operates on VHF 24 from 1 Nov - 30 April. New area code is 662. **New Kino fishing pier is OK for quick dinghy visit, not for yates to come alongside.**

**Pg. 171:** MSC added 65' slips. **September hurricane damage in all marinas is being repaired, roads fixed.**

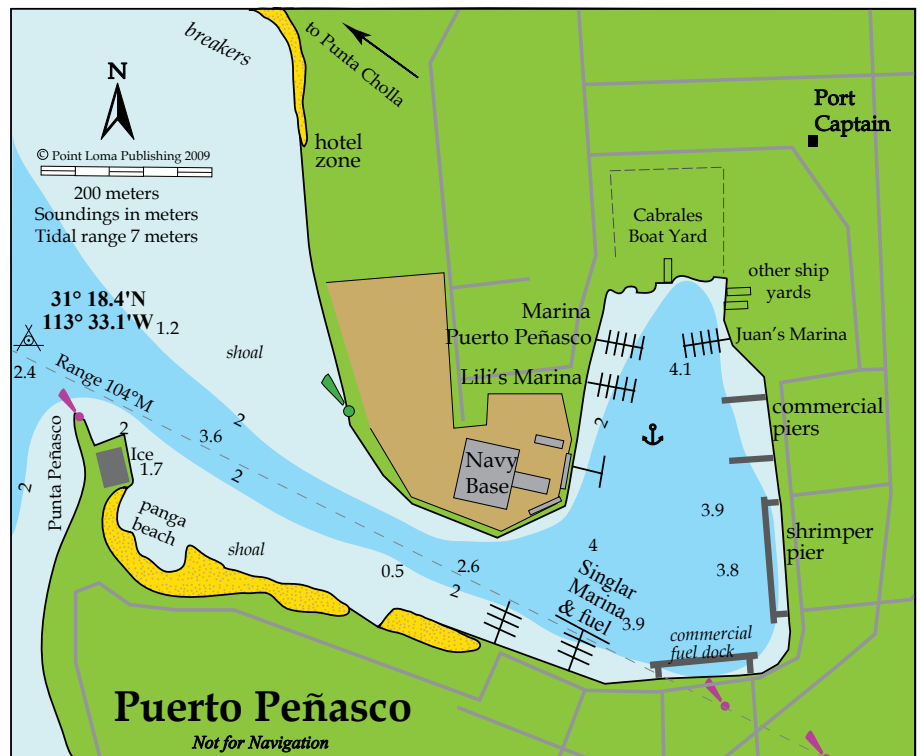
**Pg. 168-169:** No marina near Islas Venado & San Luis. Tetas de Cabra are Tetakawi in Seri.

**Pg. 173-176:** Marina Seca San Carlos (hurricane damage being repaired) again is trucking boats across

US-Mexico border. Contact Juan or Luis (622) 226-1061 x 105. New Escalera Nautica Guaymas (NW end of harbor) has 20 slips, shore services, Pemex fuel dock, large boat yard highly recommended; marina (622)224-3640. **Marina Seca Guaymas (622-221-7200) is most recommended of 3 haul-out, repair & storage yards in La Playita in Guaymas south shore.**

**Pg. 180 - 181:** New marina in construction in darsena (25°63.65'N, 109°03.41'W) just past Topo ferry pier. Hail Port Captain VHF-16 before entering harbor; stay in main channel to the ferry pier; secondary side channel to private clubs no longer dredged.

**Pg. 183:** Altata entrance & bay needs dredging, no marina yet. Don't mistake La Barra Chica (cut across



*This replaces chartlet on page 153.*

Add this new San Blas area chartlet to page 191.

low, sandy Isla Lucenilla) for the main entrance, which lies 5 n.m. farther SE. Call Capitania for panga pilot. Once inside this long bay, you can anchor almost anywhere.

**Pg. 184:** Piaxtla indent has silted up, no longer a reliable anchorage.

**Pg. 186:** Tony Cevallos new chandlery at Marina Mazatlan; (669) 116-0068. Marina Singlar Mazatlán is first dock of 15 slips on starboard (3-story glass bldg.) and Pemex fuel dock, before Marina Mazatlan. Grupo Naval Mar de Cortez (GNMC) yacht repair yard on Singlar property has 55-ton Travelift, 20 work slips, gated concrete work yard, sheds, repair services. (669) 913-3871. Marina Mazatlan compiles & updates an extensive list of local services for yatistas.

Submerged rock south of starboard jetty at old port entrance has a danger buoy (usually).

**Pg. 188 - 190:** Teacapán is slated for marina development in 2010. Isla Isabela is national park biosphere; no pets ashore. Price increase for the moorings south of Las Moñas. University frigate research bldg has expanded, sometimes volunteer guides are available.

**Pg. 192:** Singlar Marina San Blas is for sale but open in second basin to stbd from sea, 15 slips, fuel dock, 50-Ton lift, storage yard, dinghy landing, pool, 3-story office. Call dockmaster (323) 285-0022.

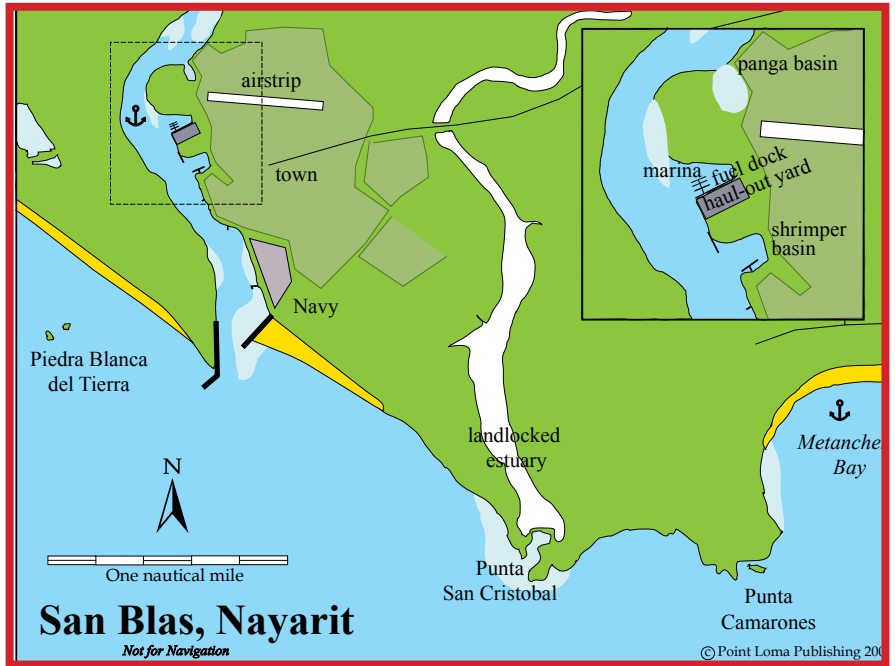
**Pg. 197:** Tres Marietas biosphere reserve has day fee, stronger enforcement of eco protection laws.

**Pg. 199:** La Cruz anchorage is popular, and buoys mark entrance to Marina Riviera Nayarit at La Cruz, (new dockmaster is Rafa), 396 slips inside new breakwater harbor; fuel dock, YC & restaurants are open; 2 dinghy docks north end are free even to anchored boats, and beach landing in west end of marina. La Cruz Shipyard open in north end of La Cruz harbor has 150-ton Travelift. *New chartlet this page.*

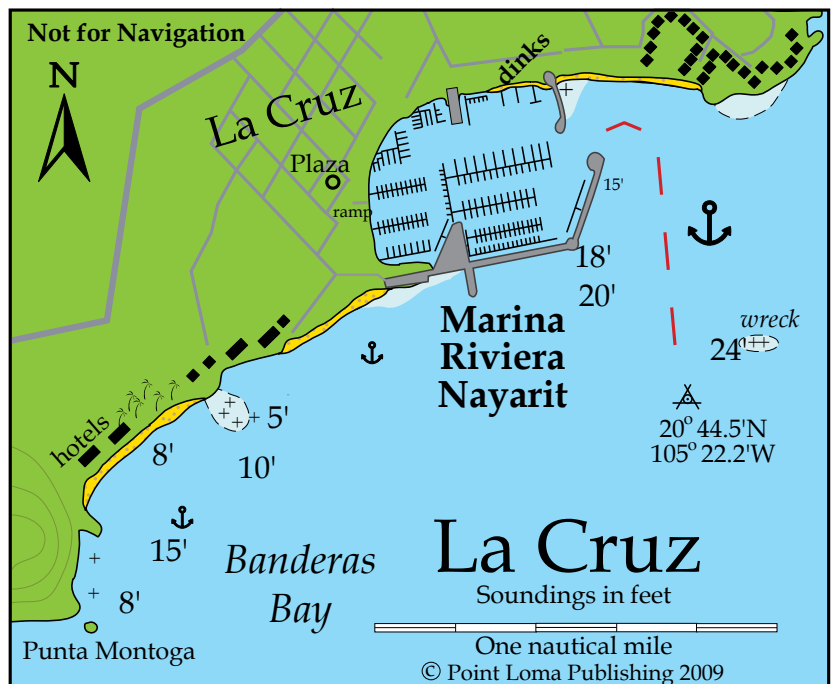
**Pg. 200:** Paradise Village Marina has larger reception dock, 22 new megayacht slips, dredged channels. Vilma's Yacht Services is VHF 22. Marina Nuevo Vallarta (to port) renovation incomplete as of Oct 09. About 60 private slips are found in Nuevo Vallarta Inlet.

**Pg. 202:** Opequimar has 88-ton Travelift, expanded yard, 'YC' cantina. Banderas Bay Regatta 2010 is March 16-20, fun & seminars for Southbounders and Puddlejumpers, hosted by Vallarta Yacht Club in Nuevo Inlet.

**Pg. 205:** Ipala Cove (new paved road) has seasonal aquaculture buoys that may prevent safe anchoring. Tehuالمixtla is



This replaces chartlet on page 199.



original name of village at head of Ipala Cove. Village south of here is called Ipala.

**Pg. 206-207:** Perula & Chamela village north end can get swamped with tour buses on holidays.

**Pg. 208:** No marina at Careyes yet, helicopter pad is gone, just more bright villas.

**Pg. 209-211:** More shops & cantinas on Aquarium Beach (end of Jungle River Dinghy excursion). Wreck of S/V Libertad reported in deep water 1/2 mile SE of Blue Bay beach. La Manzanilla (SE end of Ten Bay) has many new services and realstate-itus; beware pickpockets. In Colimilla (back lagoon), Maria's Tienda has groceries, delivers by panga. We've found fair WX anchorage in Bahia Cuestacomate, 2 n.m. W of Melaque. Road connects to Melaque and San Patricio, Highway 200. Barra has Yoga; ask on VHF net.

**Pg. 213-214:** Marina Puerto Isla Navidad new phone is (314) 337-9008 x 102. Town anchorage WNW of Pig Island silts up; access Cabo Blanco channel from east of isla. Markers and depths to the marina's fuel dock in back lagoon are fine, but due to silting in summer 2009, use caution getting to free anchorage. Cruisers share FREE list of local services. Morning VHF net is active in winter cruising season. French Baker delivers to boats then.

**Pg. 215:** Chart: Punta Carrizal has new nav light, as does Los Frailes Rocks.

**Pg. 218:** Yachts can no longer take fuel in San Pedrito Lagoon, only at Marina Las Hadas. New guarded dink landing is near Capitanía on south side of renovated entrance channel into San Pedrito Lagoon. More grocery stores are open in Playa Miramar and Playa Santiago. Manzanillo's downtown waterfront is nicely renovated, clean & dinghy friendly. New phone for Capitanía: (314) 331-1440.

**Pg. 221:** Hurricanes have eroded the sand bottom at Bucerias; no longer safe as anchorage.

**Pg. 228:** The fuel dock in Marina Ixtapa is open again, and marina is much improved (new owners). Call on VHF for the schedule of dredges working in the entrance channel to Marina Ixtapa.

**Pg. 229 & 230:** Playa Principal is same as Playa Municipal. Puerto Mio doesn't sell fuel now that Marina Ixtapa's fuel dock reopened. Locals nixed a new cruise ship pier to be built inside Z'what Bay, but feds still scouting locations nearby. Zihua Sail Fest 2010 is slated for Feb 2 - 7 at El Faro (formerly Rick's Bar); great fun & fund raiser, stinkpots welcomed too. [www.ZihuaSailFest.com](http://www.ZihuaSailFest.com)

**Pg. 232-235:** Puerto Vicente Guerrero (a.k.a. Papanoa) homes now ring Carbales cove, where a sandbar or rock was reported in the western half of the bay. New artificial reef was created near Isla Roqueta Light Rock, use caution entering Acapulco harbor. La Marina still rents moorings & a few slips sans services, but their outer docks sunk & others in disrepair. Puerto Marques has several roped-off swim beaches and seasonal docks; some will agree to permit you to land your dinghy for a day fee for full shore access.

**Pg. 236:** Acapulco Yacht Club is expanding its north dock. New 2nd phone for Sr. Jose Maria Marquez at AYC is (744) 434-1999. Many yatistas have been bypassing Acapulco due to slip shortage.

**Pg. 237: Right column: Correction to Table of Distances.** The only fuel dock is at Huatulco 238 miles from Acapulco. Punta Galera, 140 miles. Puerto Escondido, 35 miles (175 total). Puerto Angel, 40 miles (215 total). Huatulco, 23 miles (238 total).

**Pg. 238:** A new panga entrance channel to shoaly Chacahua Lagoon has twin jetties, but this is plagued by breakers and channel is not navigable by ocean-going yachts.

**Pg. 246:** New 45' long fuel dock is along the starboard seawall as you enter Huatulco's tiny municipal darsena, very awkward. Fender against panga wakes, especially if a cruise ship is in port and shore boats zoom in and out of the darsena. Hopefully, the fuel dock in Marina Chahue will be open soon. Check UPDATES.

**Pg. 251: Left column: Correction:** GPS positions were reversed for Boca de San Francisco (16°09.63'N, 94°44.96'W) and Boca de Tonalá (15°58.23'N, 93°57.28'W). Boca de San Francisco has become blocked.

**Pg. 252:** Puerto Chiapas (formerly Puerto Madero): South entrance jetty has a new 500-yard dog-leg extension bending WSW; red jetty light is located on the new seaward end. New GPS approach waypoint a half mile west of the entrance is 14°41.84'N, 92°25.37'W. Expect to be boarded and inspected each time you go in and out of Puerto Chiapas; this is normal and required. See full details on Guatemala's coastal waters and more in "Cruising Ports: the Central American Route," the companion guidebook to "Mexico Boating Guide."

Sign up to receive the next UPDATES free by email the 1st day they are posted  
from Capt. Pat Rains through Point Loma Publishing

[Info@MexicoBoating.com](mailto:Info@MexicoBoating.com)